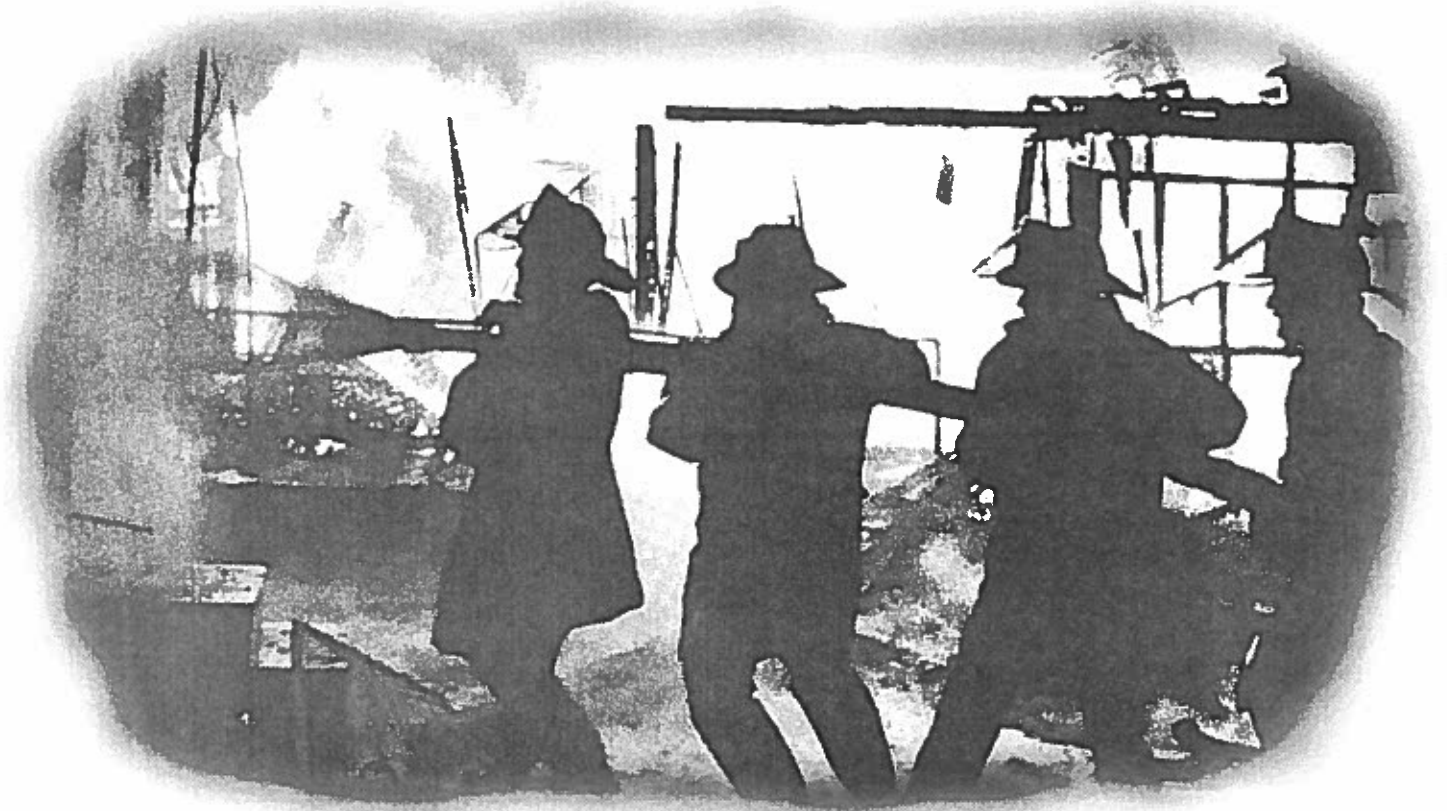


FALL 2000 NEWSLETTER

PERRY

TOWNSHIP

VOLUNTEER FIRE DEPARTMENT



**If your neighbor's house
caught fire, wouldn't you want
to do more than watch?**

Become a volunteer firefighter!

Serving the residents of Perry and Union Township since 1959!

"BUILD INDIANA" FUND



Make an escape plan and practice it. Know two ways out!!

On August 7, 2000, Indiana State Representative Jonathan Weinzapfel presented Perry Township Fire Department with a check from the Build Indiana Fund for \$10,000 to purchase firefighting equipment. Representative Weinzapfel worked hard in the State Legislature to secure the money for the Fire Department. Grants from the state from the Build Indiana Fund help to keep local property taxes low. Proceeds from the Build Indiana Fund come from the Hoosier Lottery.

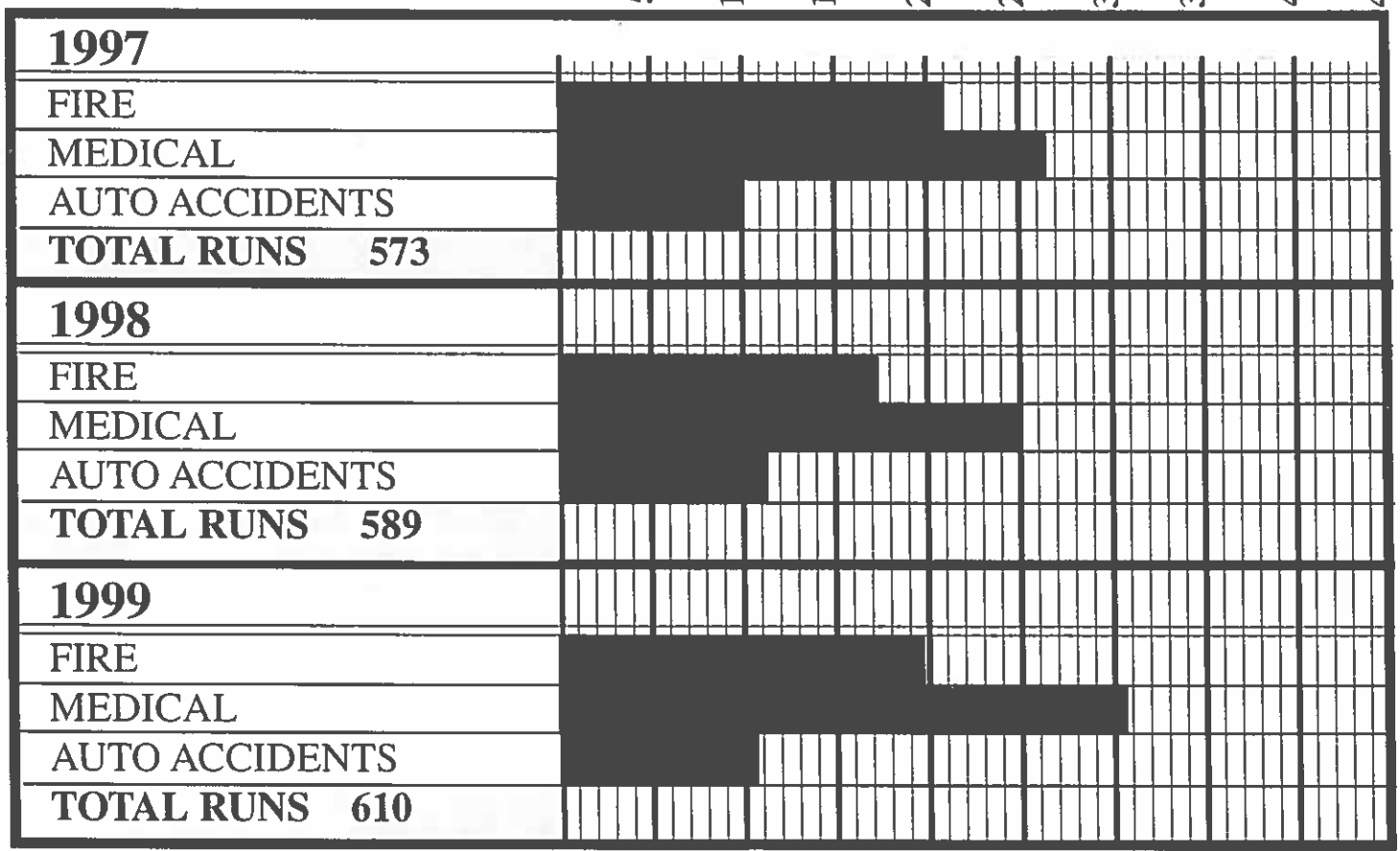
Smoke detectors cut your chance of dying in a fire in half.

Candles can be a fire hazard! Make sure you use caution when choosing a holder.

L to R: Perry Township Trustee Red Mosby, Perry Township Fire Department President Bob Leggett, Indiana State Representative Jonathan Weinzapfel

Perry Township Run Statistics

50 100 150 200 250 300 350 400 450



**Please send donations to: PERRY TOWNSHIP VOLUNTEER FIRE DEPARTMENT
P. O. BOX 7051, EVANSVILLE, IN 47719-0751
If you have already sent a donation - **THANK YOU!!****

Home Heating and Holiday Fire Safety Tips From the National Fire Protection Association

Heating equipment is the number one cause of home fires in the United States. Most of these fires could be prevented with proper understanding and use of heating equipment. When purchasing new equipment, be sure to select products which have been tested and approved by an independent testing laboratory. Install and maintain heating equipment correctly and be sure it complies with local fire and building codes. Remember: Safety should be your first consideration when heating your home. Here are some fire safety tips to remember.

HOME HEATING SAFETY

- **SPACE HEATERS** - Space heaters can be either electric or liquid fuel-powered. Both types must be placed *at least* 36 inches (one meter) away from anything combustible, including wall-paper, bedding, clothing, pets and people. Never leave space heaters operating when you are not in the room or when you go to bed. Don't leave children or pets unattended with space heaters and be sure everyone knows that drying wet mittens or other combustibles over space heaters is *a fire danger*. If you have an electric space heater check each season for fraying or splitting wires and overheating. Have these problems repaired by a professional before operating it. If you have a liquid fuel-powered space heater, use only the fuel recommended by the manufacturer. *Never* use gasoline or any other substitute fuel. When refueling, always turn off the heater and wait until it cools down before adding fuel. If you are considering a kerosene heater, be sure to check with your local fire department before purchasing to find out if it is legal in your community. Store the kerosene away from heat or open flame in a container approved by the local fire department, and be sure it is clearly marked with the fuel name.
- **FIREPLACES** - Have your chimney inspected by a professional prior to the start of every heating season and cleaned if necessary. Creosote, a chemical substance that forms when wood burns, builds up in chimneys and can cause a chimney fire if not properly cleaned. Always protect your home and your family by using a sturdy screen when burning fires. Remember to burn only wood - never burn paper or pine boughs which can float out the chimney and ignite a neighboring home. *Never* use flammable liquids in a fireplace. If you are purchasing a factory built fireplace, select one listed by a testing laboratory and have it installed according to local codes.
- **WOOD STOVES** - Be sure your wood or coal stove bears the label of a recognized testing laboratory and meets local fire codes. Follow manufacturers' recommendations for proper use and maintenance. Chimney connections and chimney flues should be inspected at the beginning of each heating season and cleaned periodically. Follow the same safety rules for wood stoves as you would for space heaters. Burn only wood and be sure the wood stove is placed on an approved stove board to protect the floor from heat and hot coals. Be sure to check with your local fire department, and check local codes before having your wood stove installed.
- *Portable LP (Propane) Gas Heaters with self-contained fuel supplies (cabinet heaters) are prohibited for home use by NFPA fire safety standards.*

TO HELP YOU PREVENT A HOME

FIRE



Perry Township
Volunteer Fire Department
P. O. Box 7051
Evansville, Indiana 47719-0751

Non-Profit Organization
U.S. Postage
PAID
Evansville, IN 47708
Permit No. 2866



Smoking materials cause more civilian fire deaths than any other source.



Most fatal home fires happen at night.



Never go back into the house or burning building - no matter what!



Delay is deadly! Always call 911 right away!!

